



LAUREL PSYCHODRAMA
TRAINING INSTITUTE

HOLISTIC • INTEGRATIVE • EXPERIENTIAL

**2021 ACTION METHODS SUPERVISION/CONSULTATION GROUP
FOR MENTAL HEALTH PROFESSIONALS & STUDENTS**

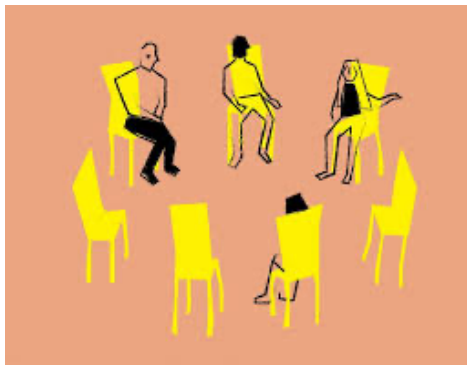
Explore clinical issues using psychodramatic action methods

Sundays

February 28, March 28, April 25, May 23
2:00 – 4:00 p.m.

ONLINE in the LPTI Zoom Room

LED BY: Catherine D. Nugent, LCPC, TEP

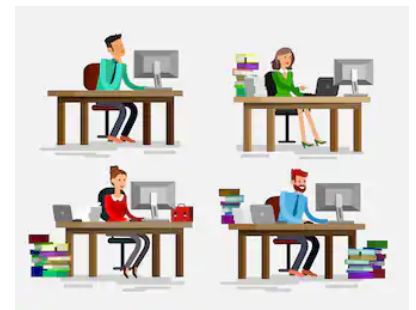


OVERVIEW: If you are looking for support, guidance and consultation in your clinical practice, consider joining this **online action methods** supervision and consultation group.

Whatever your stage of professional development, you will benefit from examining complex clinical and/or ethical issues.

As the need for physical distancing and other public health measures continue, we will meet online. Together, we will explore and share ways to incorporate psychodramatic and sociometric interventions into working online.

As always, we will explore common concerns, such as crises of confidence, unfamiliarity with specific problems and populations, countertransference reactions, challenging clients, difficult moments in groups, and others.



shutterstock.com • 417293239

TO REGISTER: Contact Cathy—410-746-7251 or cathynugent@verizon.net



LAUREL PSYCHODRAMA
TRAINING INSTITUTE
HOLISTIC • INTEGRATIVE • EXPERIENTIAL

INVESTMENT: *Discounted fee as a pandemic accommodation:* \$75 per 2.0-hour session (minimum 6, maximum 12 members).

- Some partial scholarships are available. Please inquire

These interactive and experiential sessions will take place via distance learning via Zoom until the current public health crisis passes. I will send a link the day of each session.

To help promote group cohesion, you are asked to commit to at least two of the four sessions (02/28, 03/28, 04/24, 05/23).



LEADER/SUPERVISOR/CONSULTANT: Catherine D. Nugent is a licensed clinical professional counselor and a Board-certified psychodramatist and psychodrama trainer. Cathy has a private psychotherapy practice in Laurel, Maryland, where she brings her expertise with experiential approaches to work with individuals, couples and groups. As Executive Director & Principal Trainer with Laurel Psychodrama Training Institute, Cathy trains mental health professionals and students in psychodrama. Cathy is a Fellow of the American Society of Group Psychotherapy and Psychodrama (ASGPP), a past President of the Mid-Atlantic Chapter ASGPP, and the Recipient of the ASGPP's 2019 *J.L. Moreno Award for Lifetime Achievement in Psychodrama, Sociometry and Group Psychotherapy*.

A life-long learner, Cathy is currently studying ways to translate in-person psychodramatic action methods to online platforms (Doxy.me and Zoom).

SUPERVISION INFORMATION:

LGPCs: Supervision hours acquired in this group can be counted toward the required 100 hours for Maryland LCPC licensure. (Fifty of the required 100 hours can be group supervision.)

Psychodrama Certification Candidates: These group supervision hours can be applied toward the practicum supervision requirement for psychodrama certification through the American Board of Examiners in Psychodrama, Sociometry & Group Psychotherapy. (Forty hours of supervision are required for certification.)